

---

<b>Report To:</b>	<b>The Inverclyde Council</b>	<b>Date: 7 June 2018</b>
<b>Report By:</b>	<b>Corporate Director, Environment, Regeneration and Resources</b>	<b>Report No: LP/056/18</b>
<b>Contact Officer:</b>	<b>Caroline Shaw</b>	<b>Contact No: 712115</b>
<b>Subject:</b>	<b>Proposed Traffic Regulation Order – The Inverclyde Council, Disabled Persons’ Parking Places (On Street) Order No. 4 2017</b>	

---

## 1.0 PURPOSE

- 1.1 The purpose of this report is to request the Council to consider a remit from the Environment & Regeneration Committee.

## 2.0 SUMMARY

- 2.1 The Environment & Regeneration Committee held on 3 May 2018 after consideration of a report by the Corporate Director Environment, Regeneration & Resources on the proposed Traffic Regulation Order – The Inverclyde Council, Disabled Persons’ Parking Places (On Street) Order No. 4 2017 recommended that the Inverclyde Council be asked to make the Traffic Regulation Order and to remit it to the Head of Environmental and Commercial Services and the Head of Legal and Property Services to arrange for its implementation.

## 3.0 RECOMMENDATION

- 3.1 That the Inverclyde Council approve the making of the Traffic Regulation Order – The Inverclyde Council, Disabled Persons’ Parking Places (On Street) Order No. 4 2017, all as detailed in the copy of the proposed Order forming a supplement to the principal Minute hereof, and that the Head of Environmental and Commercial Services and the Head of Legal and Property Services be authorised to take all necessary action in connection therewith. Appendix

**Gerard Malone**  
**Head of Legal and Property Services**

## **4.0 BACKGROUND**

- 4.1 Local Authorities are empowered to make Orders under the Road Traffic Regulation and Roads (Scotland) Acts 1984 and under the Council's Scheme of Delegation the Head of Environmental and Commercial Services is responsible for the making, implementation and review of Traffic Management Orders and Traffic Regulation Orders.
- 4.2 The provision of on-street parking places for use by disabled drivers, who are the holders of a Disabled Person's Badge, is regulated by the Disabled Persons' Parking Places (Scotland) Act 2009. Inverclyde Council is required to promote a Traffic Regulation Order to regulate the use of such parking places.
- 4.3 The Council is asked to note that, if approved, the Order may not be implemented until the making of the Order has been advertised to allow any persons who so wishes a period of six weeks to question the validity of the Order in terms of the Road Traffic Regulation Act 1984.

## **5.0 IMPLICATIONS**

### **Finance**

- 5.1 There are no financial implications arising from this report.

### **Legal**

- 5.2 There are no legal implications arising from this report.

### **Human Resources**

- 5.3 There are no HR implications arising from this report.

### **Equalities**

- 5.4 There are no equalities implications arising from this report.

### **Repopulation**

- 5.5 There are no repopulation implications arising from this report.

## **6.0 CONSULTATIONS**

- 6.1 The proposals have been advertised in the Greenock Telegraph and full details of the proposals have been made available for public inspection during normal office hours at the offices of the Head of Environmental and Commercial Services, the Customer Service Centre, and at Central, Gourock, Kilmacollm and Port Glasgow Libraries.
- 6.2 Three written objections were received to the proposed Order. One was outwith the time limit for objections to be lodged; one did not have valid grounds for objection and the other objection was uplifted. There are, therefore, no valid objections to this Order.

## **7.0 LIST OF BACKGROUND PAPERS**

- 7.1 None

**THE INVERCLYDE COUNCIL**  
**DISABLED PERSONS' PARKING PLACES**  
**(ON-STREET) ORDER NO. 4 2017**

**TRAFFIC REGULATION ORDER**

**THE INVERCLYDE COUNCIL**  
**DISABLED PERSONS' PARKING PLACES (ON-STREET)**  
**ORDER NO. 4 2017**

The Inverclyde Council in exercise of the powers conferred on them by Section 32(1) of the Road Traffic Regulation Act 1984 ("the Act") and of all other enabling powers and after consultation with the Chief Constable of Police Scotland in accordance with Part III of Schedule 9 to the Act hereby make the following Order.

1. This Order may be cited as "The Inverclyde Council Disabled Persons' Parking Places (On-Street) Order No. 4 2017" and shall come into operation on #####
2. In this Order the following expressions have the meanings hereby assigned to them:-
  - "Council" means The Inverclyde Council or its successors as Roads Authority;
  - "disabled person's badge" means:
    - (a) a badge issued under Section 21 of the Chronically Sick and Disabled Persons Act 1970 (as amended);
    - (b) a badge issued under a provision of the law of Northern Ireland corresponding to that section; or
    - (c) a badge issued by any member State other than the United Kingdom for purposes corresponding to the purposes for which badges under that section are issued;and which has not ceased to be in force;
  - "disabled person's vehicle" means a vehicle lawfully displaying a disabled person's badge;
  - "parking attendant" means a person employed in accordance with Section 63A of the Act to carry out the functions therein;
  - "parking place" means an area of land specified by number and name in Columns 1 and 2 in the Schedule to this Order;
  - "traffic sign" means a sign prescribed or authorised under Section 64 of the Act; and
  - "vehicle" unless the context otherwise requires, means a vehicle of any description and includes a machine or implement of any kind drawn or propelled along roads whether or not by mechanical power.
3. The Schedule titled "Disabled Persons' Parking Places (On Street) Order No. 4 2017" forms the Schedule to this Order.
4. Each area of road which is described in the Schedule to this Order and the plans relative to this Order is hereby designated as a parking place.
5. The parking places shall only be used for the leaving of disabled persons' vehicles displaying a valid disabled person's badge.

6. The limits of each parking place shall be indicated on the carriageway as prescribed by The Traffic Signs Regulations and General Directions 2016.
7. Every vehicle left in any parking place shall stand such that no parking place is occupied by more than one vehicle and that every part of the vehicle is within the limits of the parking place provided that, where the length of a vehicle precludes compliance with this paragraph, such vehicle shall be deemed to be within the limits of a parking place if:-
  - the extreme front portion or, as the case may be, the extreme rear portion of the vehicle is within 300mm of an indication on the carriageway provided under this Order in relation to the parking place; and
  - the vehicle, or any part thereof, is not within the limits of any adjoining parking place.
8. Any person duly authorised by the Council or a police officer in uniform or a traffic warden or parking attendant may move or cause to be moved in case of any emergency, to any place they think fit, vehicles left in a parking place.
9. Any person duly authorised by the Council may suspend the use of a parking place or any part thereof whenever such suspension is considered reasonably necessary:-
  - for the purpose of facilitating the movement of traffic or promoting its safety;
  - for the purpose of any building operation, demolition, or excavation in or adjacent to the parking place or the laying, erection, alteration, removal or repair in or adjacent to the parking place of any sewer or of any main, pipe, apparatus for the supply of gas, water electricity or of any telecommunications apparatus, traffic sign or parking meter;
  - for the convenience of occupiers of premises adjacent to the parking place on any occasion of the removal of furniture from one office or dwellinghouse to another or the removal of furniture from such premises to a depository or to such premises from a depository;
  - on any occasion on which it is likely by reason of some special attraction that any street will be thronged or obstructed; or
  - for the convenience of occupiers of premises adjacent to the parking place at times of weddings or funerals or on other special occasions.
10. A police officer in uniform may suspend for not longer than twenty four hours the use of a parking place or part thereof whenever such suspension is considered reasonably necessary for the purpose of facilitating the movement of traffic or promoting its safety.

Sealed with the Common Seal of The Inverclyde Council and subscribed for them and on their behalf by #####, Proper Officer, on the ##### day of #####, Two Thousand and Eighteen.

**THE INVERCLYDE COUNCIL**  
**DISABLED PERSONS' PARKING PLACES**  
**(ON-STREET) ORDER NO. 4 2017**

**Statement of Reasons for Proposing to Make  
the above Order**

It is considered necessary in order to comply with The Disabled Persons' Parking Places (Scotland) Act 2009, Section 5, to make the above Order to provide assistance for disabled persons who hold a badge under the Disabled Persons (Badges for Motor Vehicles) (Scotland) Regulations 2000 as amended and by revoking those parking places no longer required to maximise street parking capacity.

**Willie Rennie**  
**Head of Environmental & Commercial Services**  
**1 Ingleston Park**  
**Cartsburn Street**  
**GREENOCK**  
**PA15 4UE**

# INVERCLYDE COUNCIL

## DISABLED PERSONS' PARKING PLACES (ON-STREET) ORDER No.4 2017

### SCHEDULE

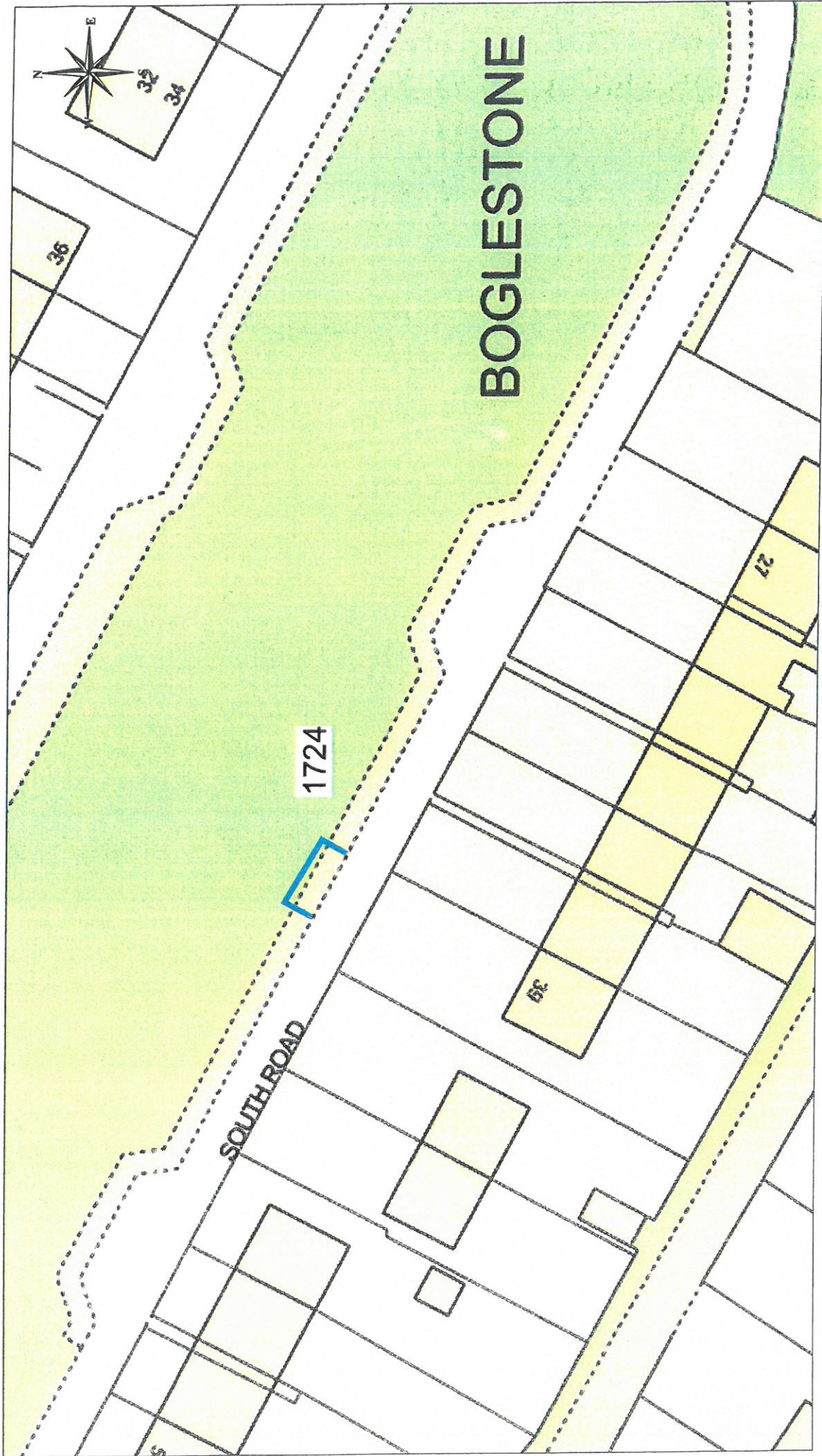
Rev A

All and whole that area of ground as described in Column 2 in the table below:

Column 1	Column 2
<b><u>Ref No.</u></b>	<b><u>Address of Disabled Person's Parking Place to be created or revoked @ "ex-adverso"</u></b>
1567	Divert Road, Gourock
1724	39 South Road, Port Glasgow
1725	55 Cardwell Road, Gourock
1728	22 Victoria Road, Gourock
1730	44 North Road, Port Glasgow
1731	28 Leperstone Avenue, Kilmacolm
1732	59 Albert Road, Gourock
1733	120 Leven Road, Greenock
1736	55 Bawhirley Road, Greenock
1738	6 Shaw Place, Greenock
1739	89 Kilmacolm Road, Greenock
1740	42 Balloch Road, Greenock
1744	2 Levanne Place, Gourock
1745	28 Pembroke Road, Greenock
1746	2 Prospecthill View, Greenock
1747	14 Gordon Street, Greenock
1748	4 Alderbrae Road, Port Glasgow
1266	Glenbrae Road, Port Glasgow





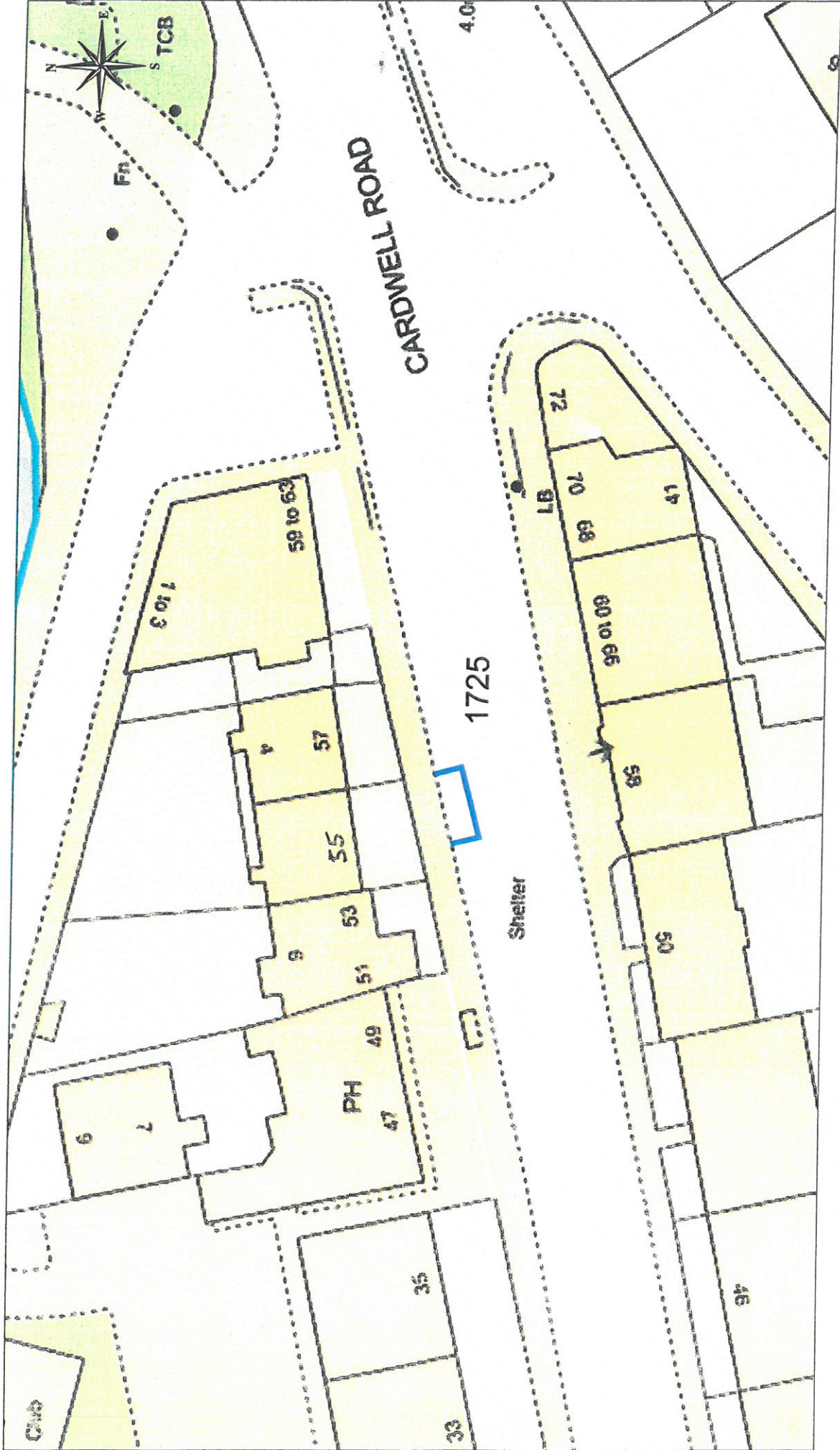


This material has been reproduced from the Ordnance Survey database with the permission of the Controller of Her Majesty's Stationery Office. © Crown Copyright.

DISABLED PERSONS' PARKING PLACE  
 39 SOUTH ROAD, PORT GLASGOW  
 PLACE No. 1724

**Inverclyde** council  
 Environmental Services

Regeneration & Environment  
 Corporate Director: Aubrey Fawcett  
 Municipal Buildings  
 Clyde Square  
 Greenock  
 PA15 1LY  
 Tel: 01475 712712  
 Fax: 01475 712731  
 aubr@inverclyde.nv.uk

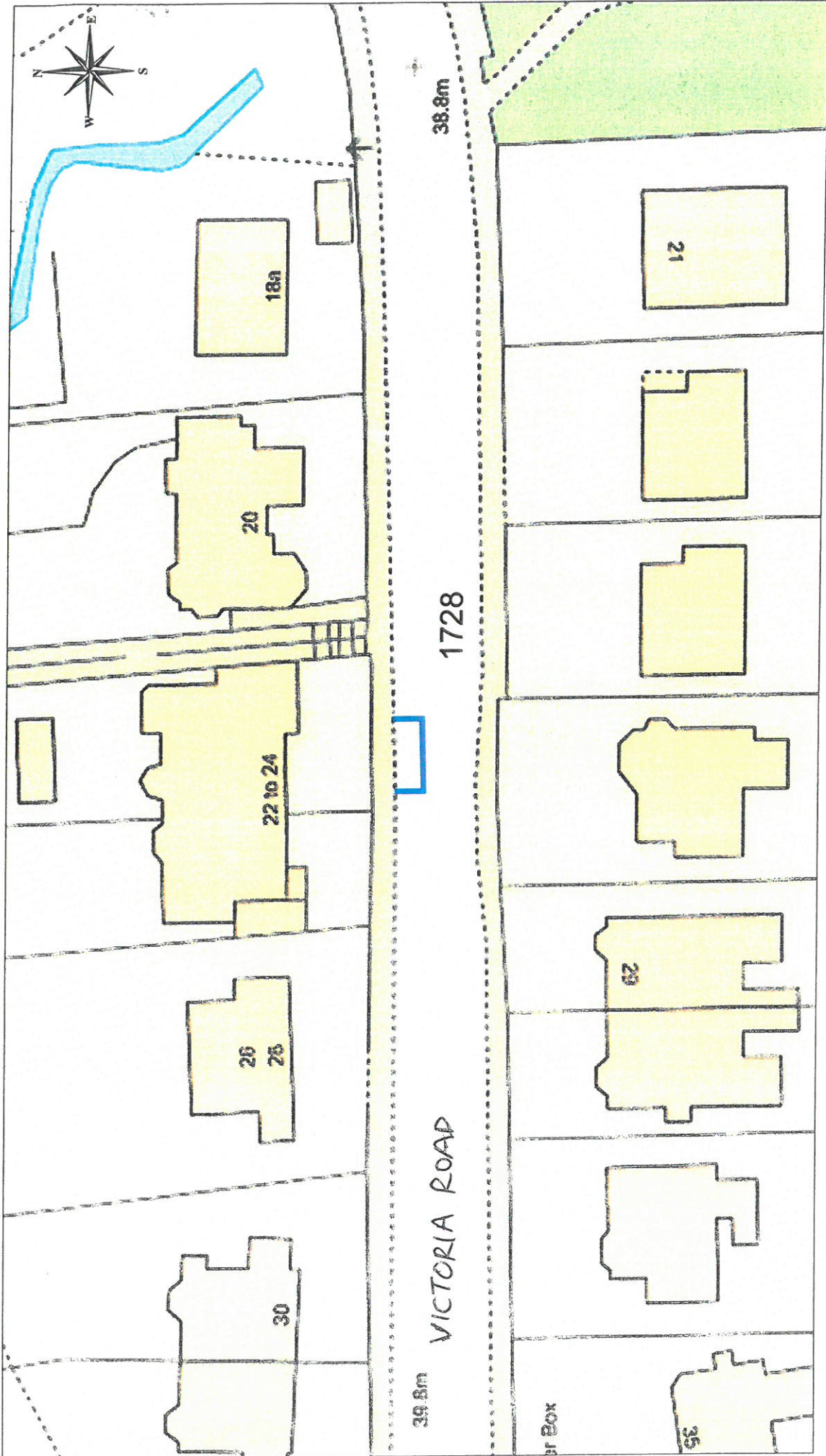


This material has been reproduced from Ordnance Survey data with the permission of the Controller of Her Majesty's Stationery Office. © Crown Copyright.

DISABLED PERSONS' PARKING PLACE  
 55 CARDWELL ROAD, GOUROCK  
 PLACE No. 1725

**Inverclyde** council  
**Environmental Services**

Regeneration & Environment  
 Corporate Director: Aubrey Fawcett  
 Municipal Buildings  
 Clyde Square  
 Greenock  
 PA15 1LY  
 Tel: 01475 712712  
 Fax: 01475 712731  
 Address: invec@inverclyde.mnu.nik



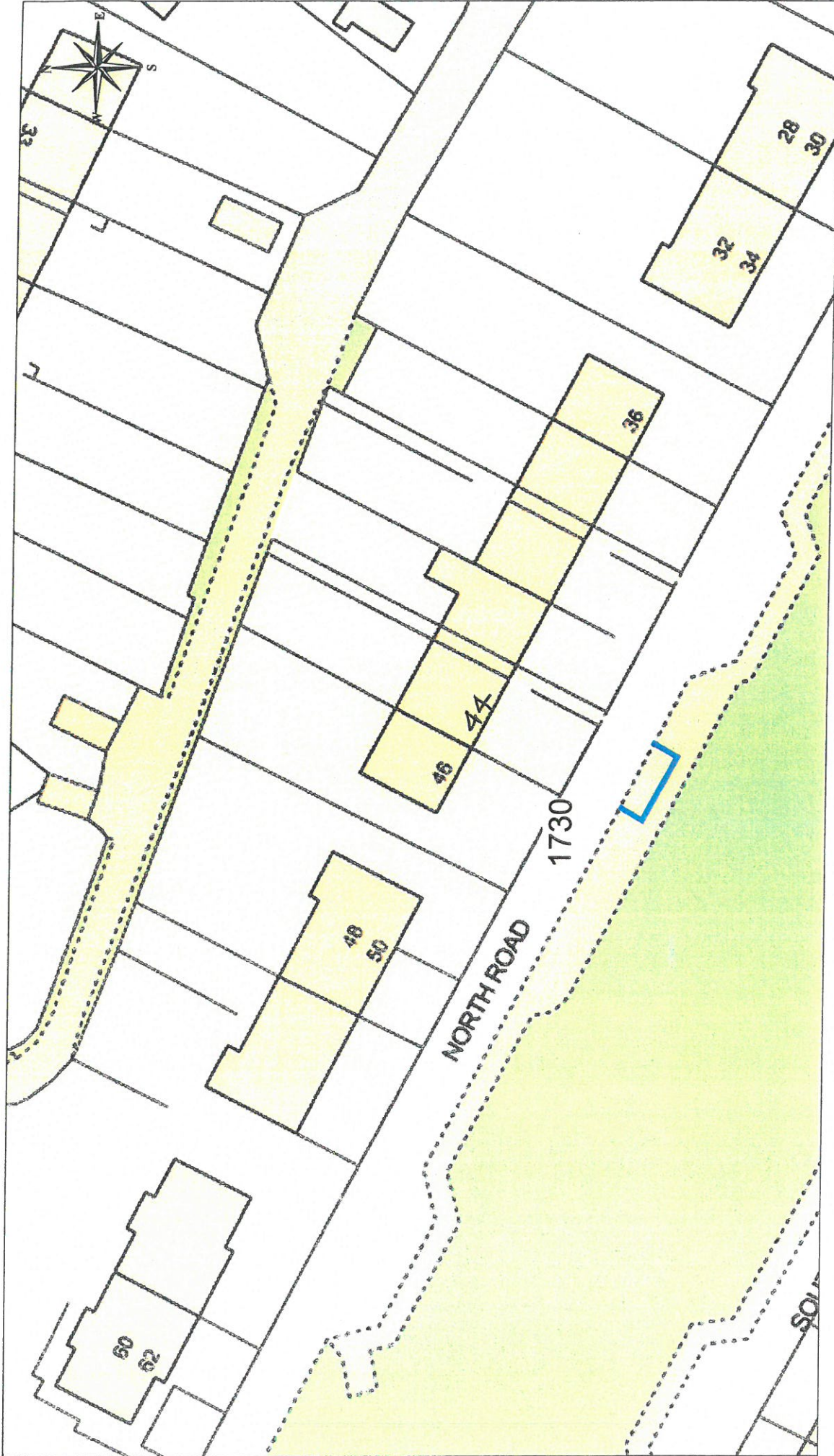
**Inverclyde**  
council  
**Environmental Services**

Regeneration & Environment  
Corporate Director: Aubrey Fawcett  
Municipal Buildings  
Clyde Square  
Greenock  
PA15 1LY  
Tel: 01475 712712  
Fax: 01475 712731  
aubrey.fawcett@inverclyde.nv.gov.uk

**DISABLED PERSONS' PARKING PLACE**  
**22 VICTORIA ROAD, GOUROCK**  
**PLACE No. 1728**



This material has been reproduced from  
Ordnance Survey digital data with  
the permission of the Controller of  
Her Majesty's Stationery Office.  
© Crown Copyright

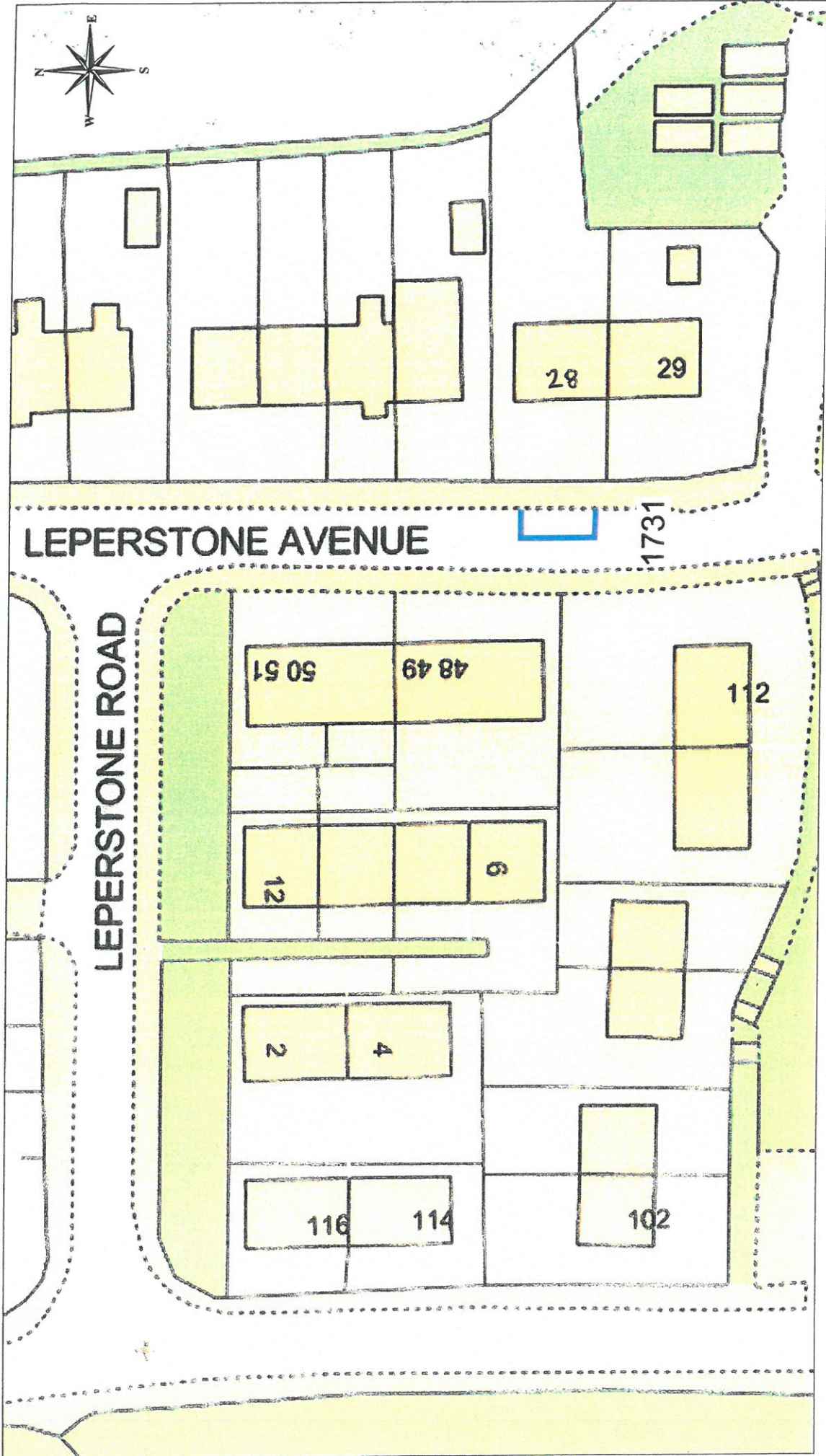


This material has been reproduced from Ordnance Survey digital map data with the permission of the Controller of Her Majesty's Stationery Office.  
© Crown copyright.

DISABLED PERSONS' PARKING PLACE  
44 NORTH ROAD, PORT GLASGOW  
PLACE No. 1730

**Inverclyde** council  
**Environmental Services**

Regeneration & Environment  
Corporate Director: Aubrey Fawcett  
Municipal Buildings  
Clyde Square  
Glasgow  
PA15 1LY  
Tel: 01475 712712  
Fax: 01475 712731  
aubrey.fawcett@inverclyde.nv.gov.uk

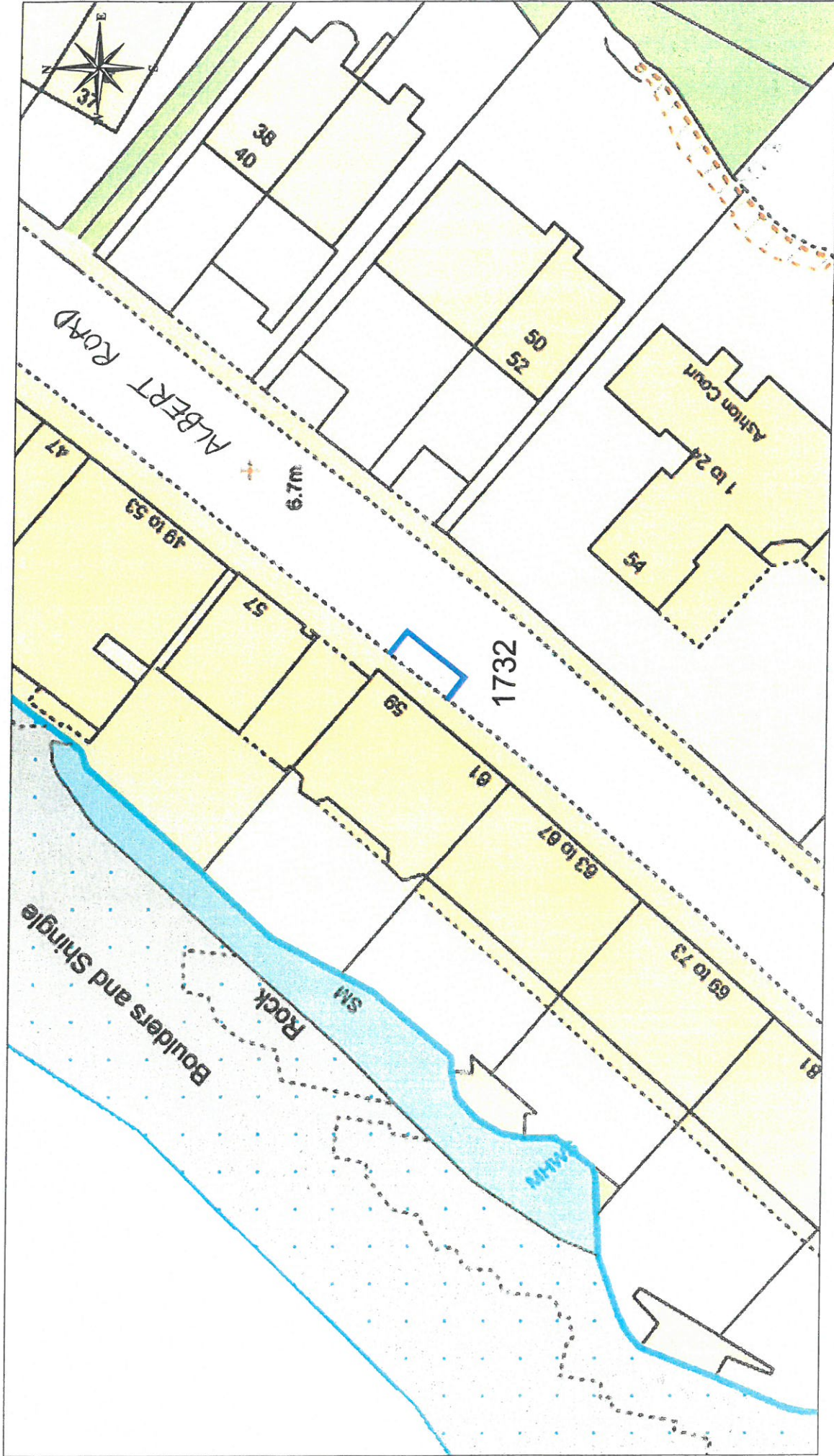


This material has been reproduced from Ordnance Survey data available to the public under licence with the permission of the Controller of Her Majesty's Stationery Office. © Crown Copyright.

DISABLED PERSONS' PARKING PLACE  
 28 LEPERSTONE AVENUE, KILMACOLM  
 PLACE No. 1731

**Inverclyde**  
 council  
**Environmental Services**

Regeneration & Environment  
 Corporate Director: Aubrey Fawcett  
 Municipal Buildings  
 Clyde Square  
 Greenock  
 PA15 1LY  
 Tel: 01475 712712  
 Fax: 01475 712731  
 aubrey.fawcett@inverclyde.nv.uk

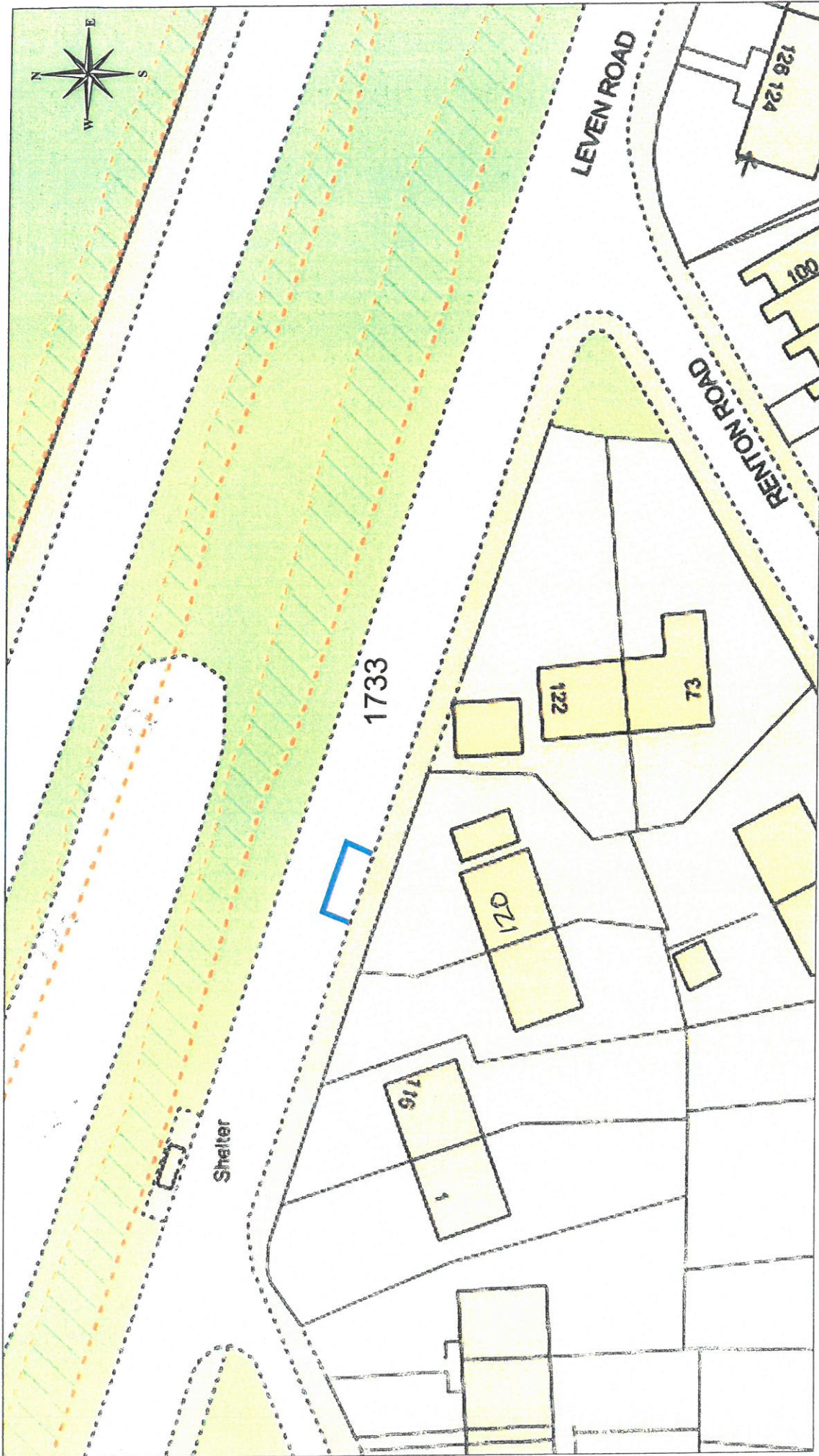


This material has been reproduced from the Ordnance Survey digital map data with the permission of the Ordnance Survey, Her Majesty's Stationery Office.  
© Crown Copyright.

DISABLED PERSONS' PARKING PLACE  
59 ALBERT ROAD, GOUROCK  
PLACE No. 1732

**Inverclyde**  
Council  
**Environmental Services**

Regeneration & Environment  
Corporate Director: Aubrey Fawcett  
Municipal Buildings  
Clyde Square  
Greenock  
PA15 1LY  
Tel: 01475 712712  
Fax: 01475 712731



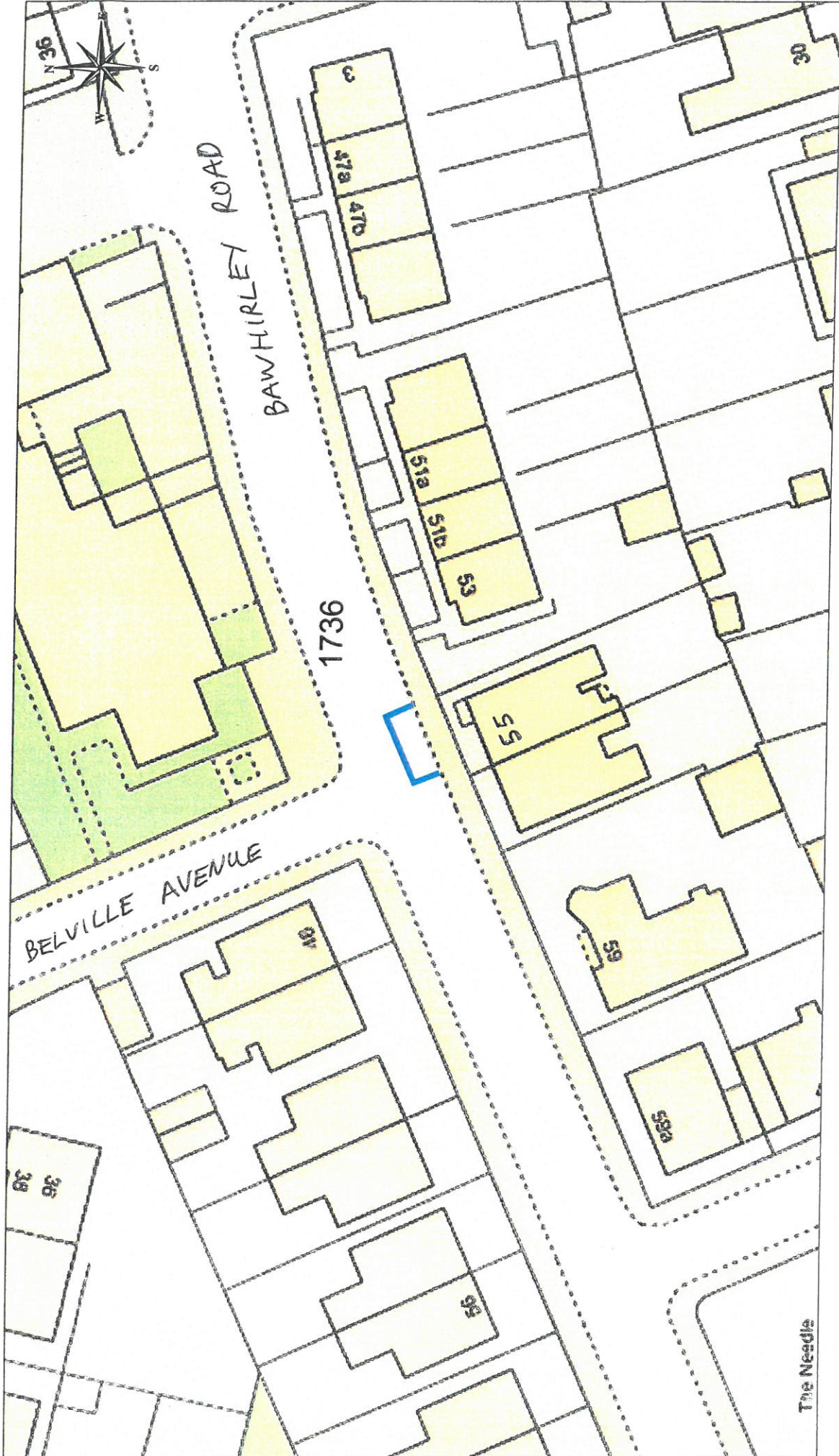
DISABLED PERSONS' PARKING PLACE  
 120 LEVEN ROAD, GREENOCK  
 PLACE No. 1733

**Inverclyde**  
 council  
**Environmental Services**

Regeneration & Environment  
 Corporate Director: Aubrey Fawcett  
 Municipal Buildings  
 Clyde Square  
 Greenock  
 PA 15 1LY  
 Tel: 01475 712712  
 Fax: 01475 712731  
 aubrey.fawcett@inverclyde.gov.uk



This material has been reproduced from  
 Ordnance Survey digital map data with  
 the permission of the Controller of  
 Her Majesty's Stationery Office.  
 © Crown Copyright



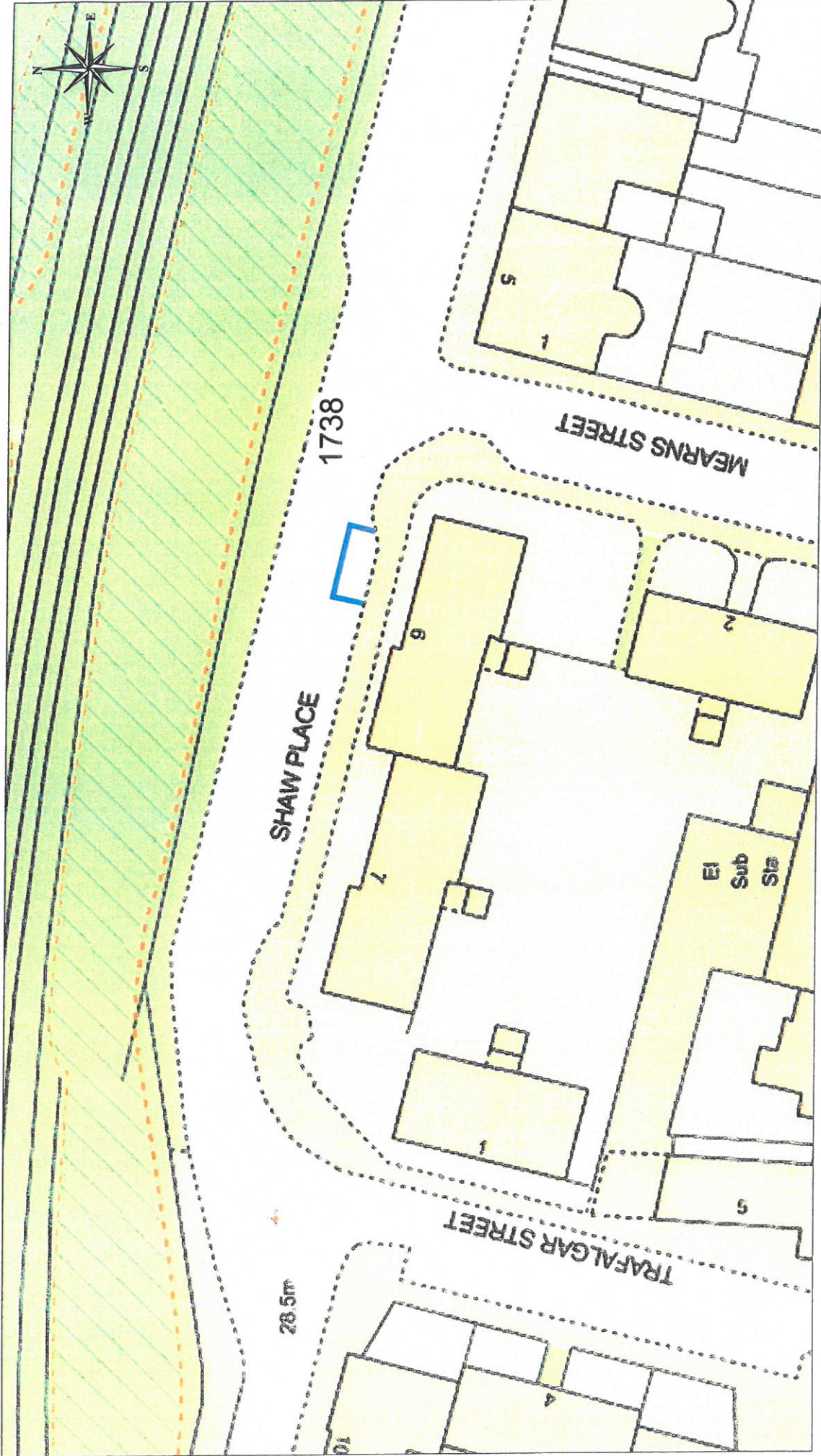
**DISABLED PERSONS' PARKING PLACE**  
**55 BAWHIRLEY ROAD, GREENOCK**  
**PLACE No. 1736**

The Needle

**Inverclyde**  
 council  
**Environmental Services**

Regeneration & Environment  
 Corporate Director: Aubrey Fawcett  
 Municipal Buildings  
 Clyde Square  
 Greenock  
 PA15 1LY  
 Tel: 01475 712712  
 Fax: 01475 712731





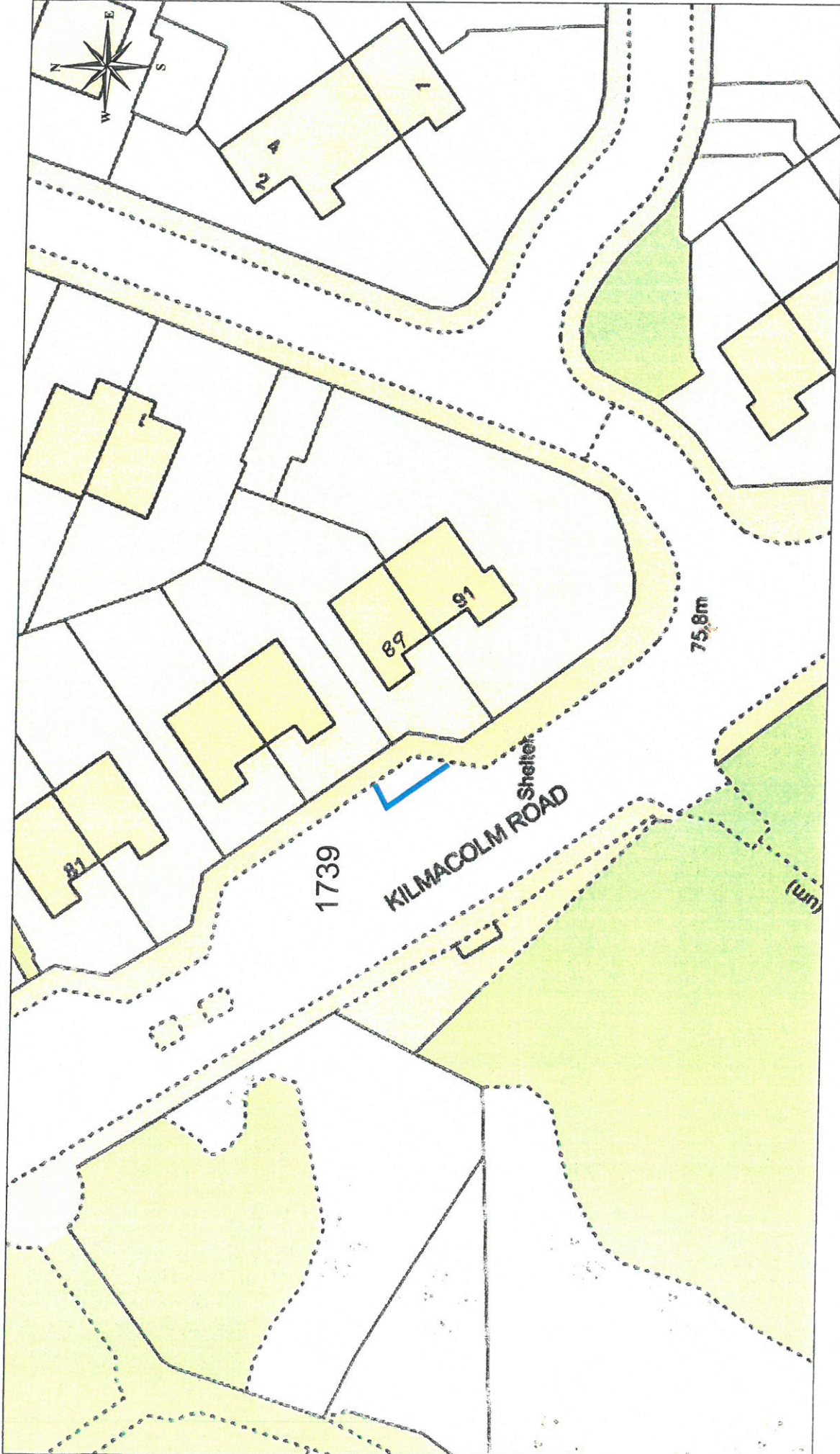
DISABLED PERSONS' PARKING PLACE  
 6 SHAW PLACE, GREENOCK  
 PLACE No. 1738

**Inverclyde** council  
**Environmental Services**

Regeneration & Environment  
 Corporate Director: Aubrey Fawcett  
 Municipal Buildings  
 Clyde Square  
 Greenock  
 PA15 1LY  
 Tel: 01475 712712  
 Fax: 01475 712731  
 aubrey.fawcett@inverclyde.nv.uk



This material has been reproduced from  
 Ordnance Survey digital map data with  
 the permission of the Controller of  
 Her Majesty's Stationery Office.  
 © Crown copyright.

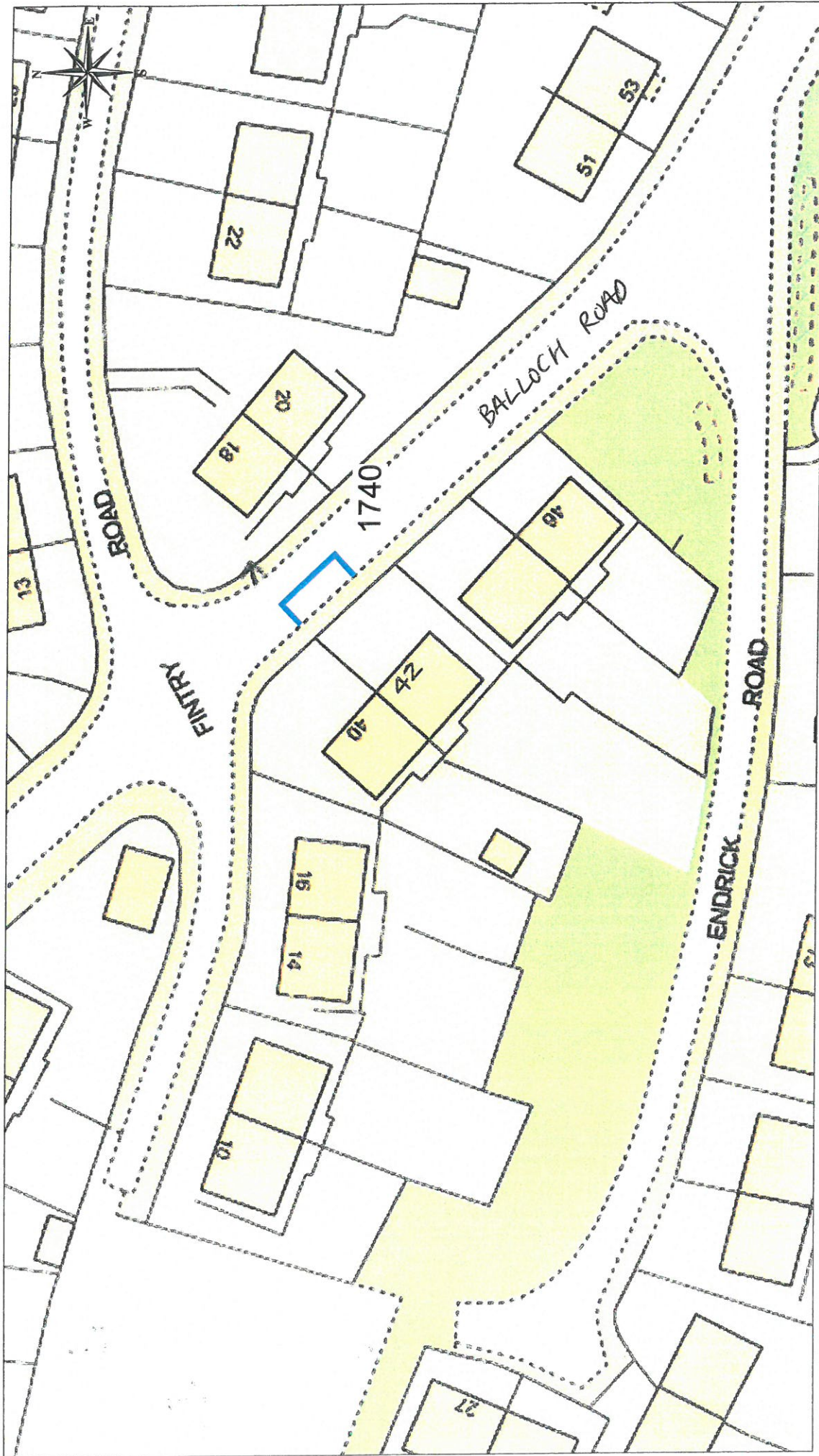


This work has been reproduced from Ordnance Survey data with the permission of the Controller of Her Majesty's Stationary Office. © Crown Copyright

DISABLED PERSONS' PARKING PLACE  
 89 KILMACOLM ROAD, GREENOCK  
 PLACE No. 1739

**Inverclyde** council  
**Environmental Services**

Regeneration & Environment  
 Corporate Director: Aubrey Fawcett  
 Municipal Buildings  
 Clyde Square  
 Greenock  
 PA15 1LY  
 Tel: 01475 712712  
 Fax: 01475 712731  
 aubrey.fawcett@inverclyde.nsw.nhs.uk

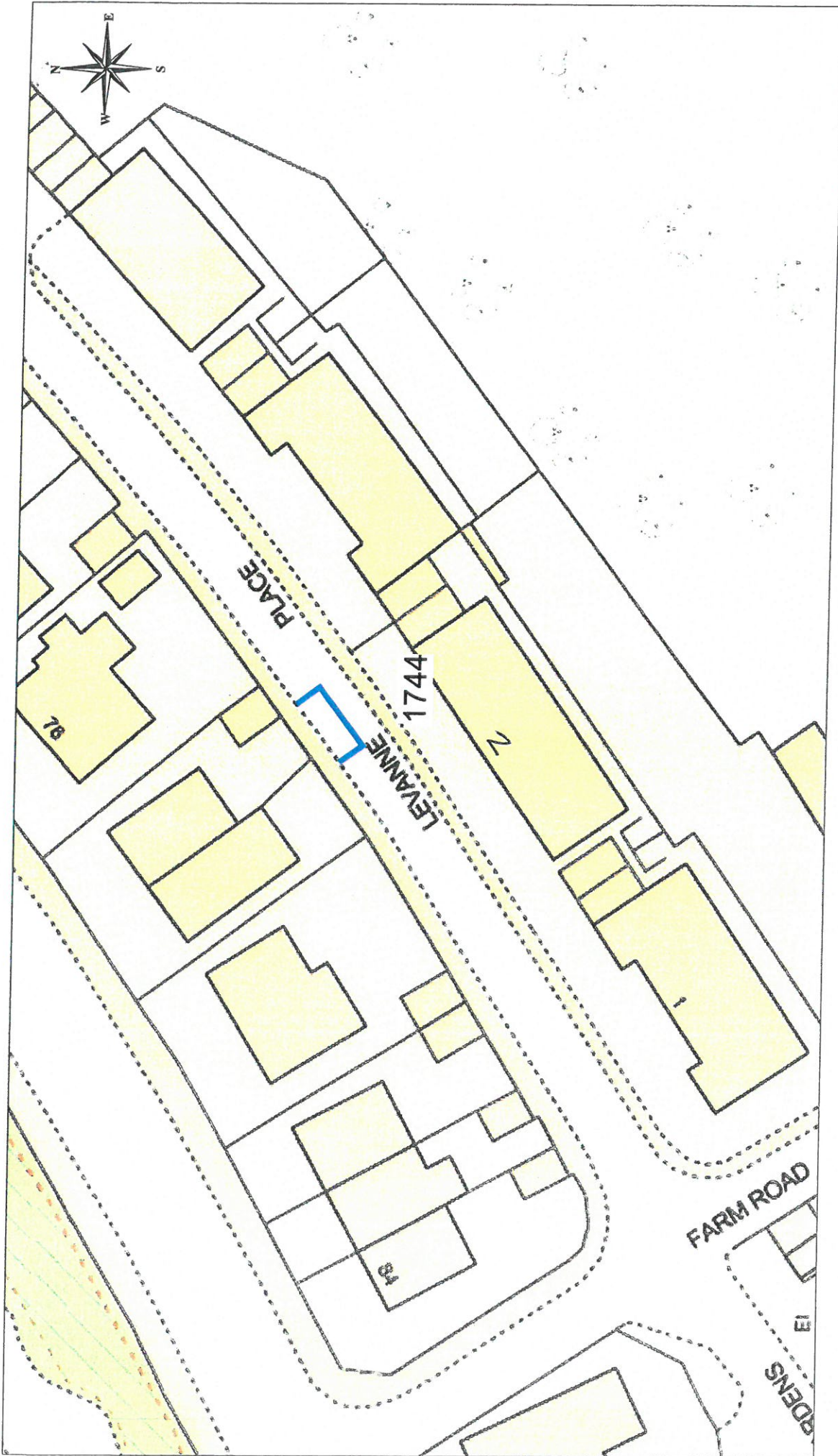


This material has been extracted from Ordnance Survey digital map data with the permission of the Controller of Her Majesty's Stationery Office. © Crown Copyright.

DISABLED PERSONS' PARKING PLACE  
 42 BALLOCH ROAD, GREENOCK  
 PLACE No. 1740

**Inverclyde** council  
**Environmental Services**

Regeneration & Environment  
 Corporate Director: Aubrey Fawcett  
 Municipal Buildings  
 Clyde Square  
 Greenock  
 PA15 1LY  
 Tel: 01475 712712  
 Fax: 01475 712731  
 e-mail: a.fawcett@inverclyde.nhs.uk

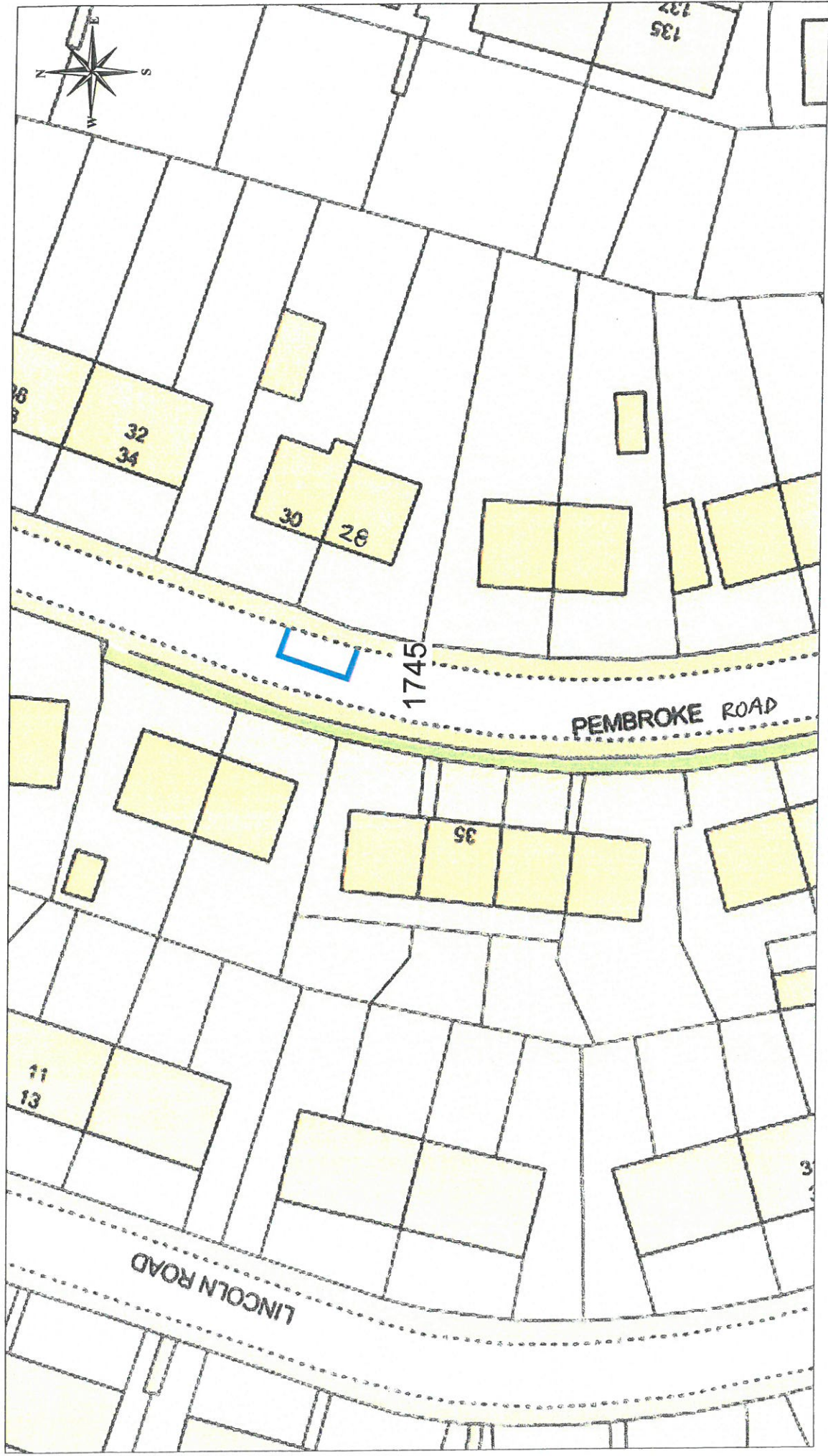



 Ordnance Survey  
 Licensed System Supplier  
This material has been reproduced from the Ordnance Survey digital map data with the permission of the Controller of Her Majesty's Stationery Office. © Crown copyright.

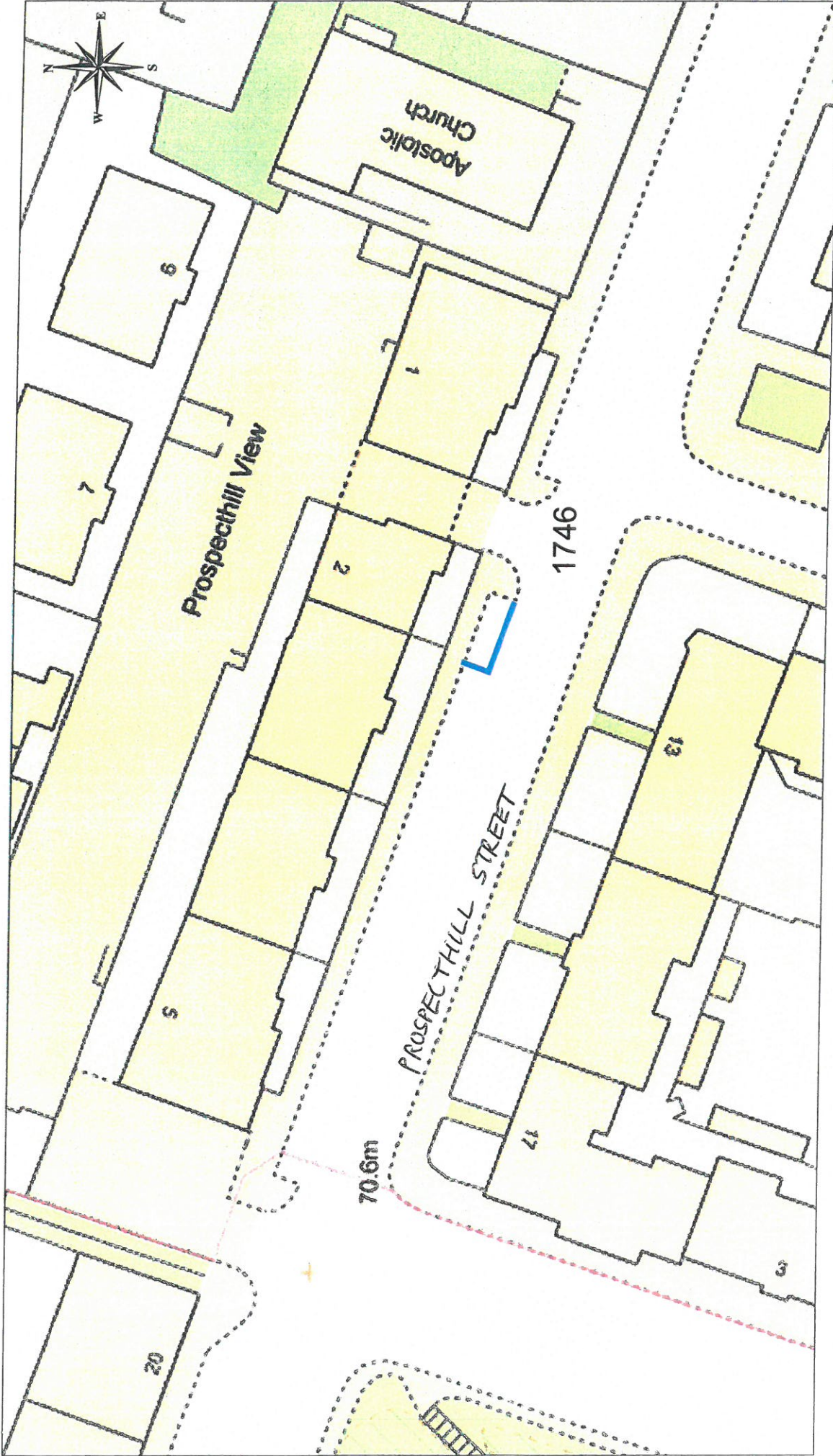
**DISABLED PERSONS' PARKING PLACE**  
**2 LEVANNE PLACE, GOUROCK**  
**PLACE No. 1744**

**Inverclyde**  
 council  
**Environmental Services**

Regeneration & Environment  
 Corporate Director: Aubrey Fawcett  
 Municipal Buildings  
 Clyde Square  
 Greenock  
 PA15 1LY  
 Tel: 01475 712712  
 Fax: 01475 712731  
 aubrey.fawcett@inverclyde.mv.gov.uk



**DISABLED PERSONS' PARKING PLACE**  
**28 PEMBROKE ROAD, GREENOCK**  
**PLACE No. 1745**



**DISABLED PERSONS' PARKING PLACE**  
**2 PROSPECTHILL VIEW, GREENOCK**  
**PLACE No. 1746**

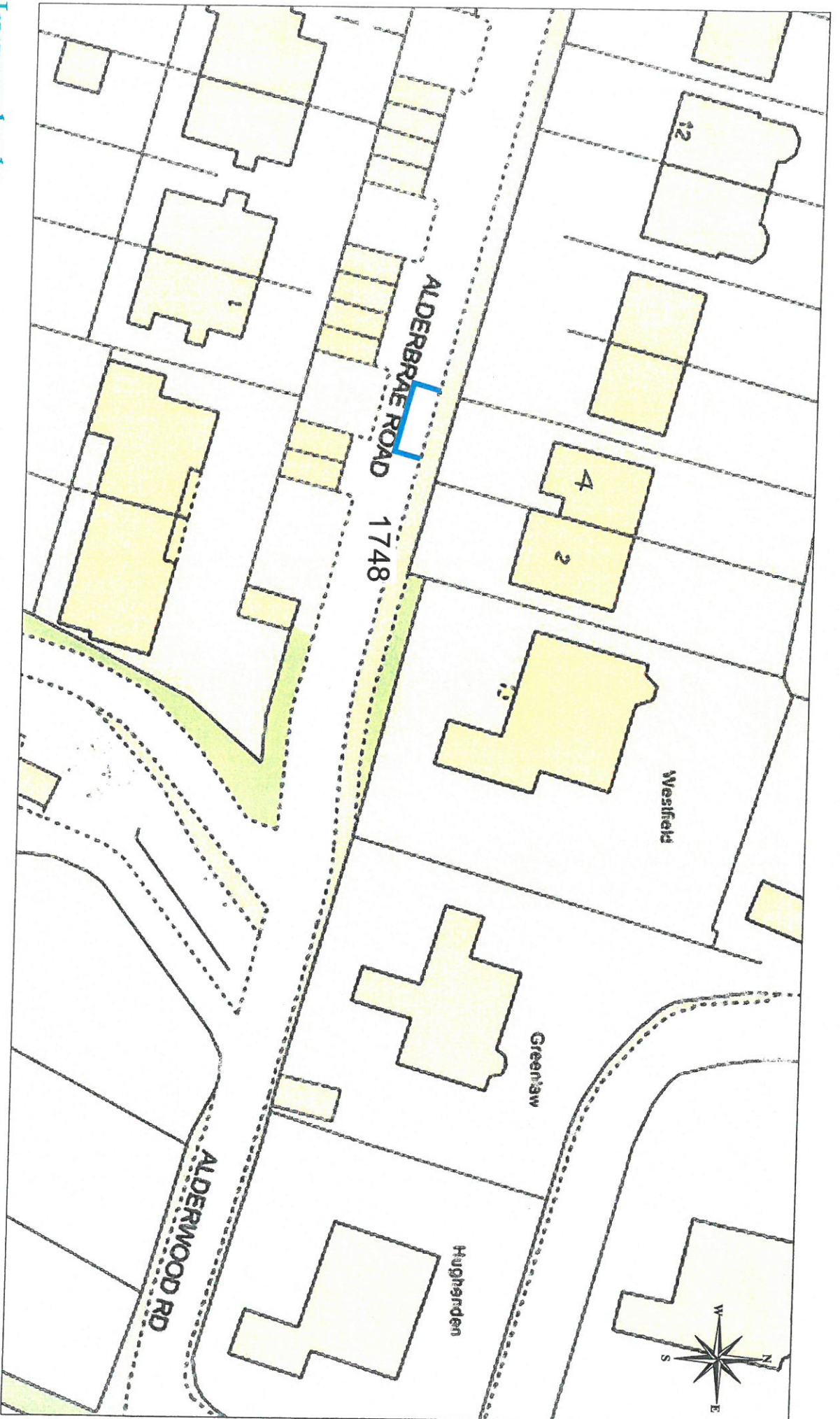


This material has been reproduced from Ordnance Survey digital map data with the permission of the Controller of Her Majesty's Stationery Office. © Crown Copyright.

DISABLED PERSONS' PARKING PLACE  
 14 GORDON STREET, GREENOCK  
 PLACE No. 1747

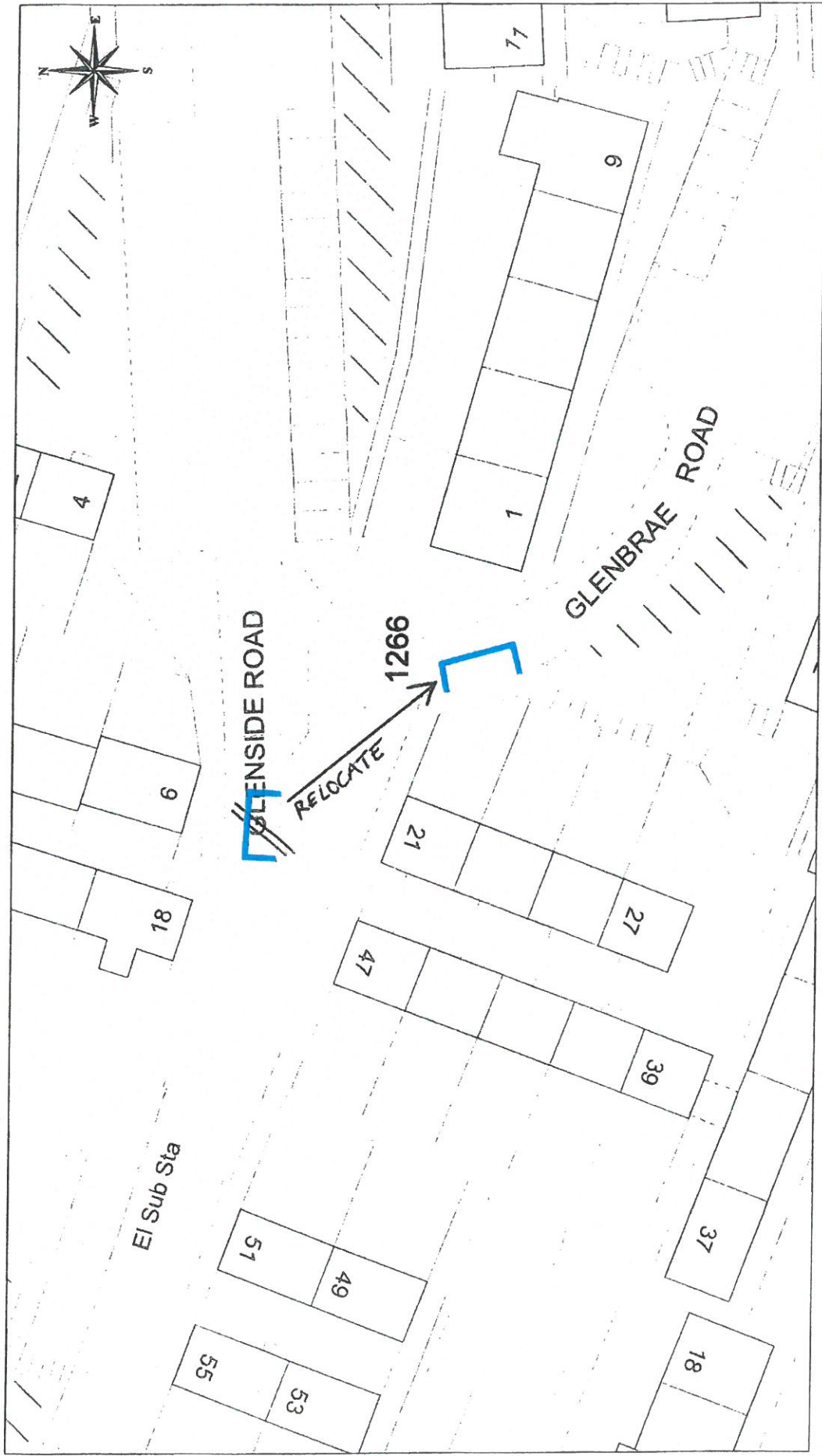
**Inverclyde** council  
**Environmental Services**

Regeneration & Environment  
 Corporate Director: Aubrey Fawcett  
 Municipal Buildings  
 Clyde Square  
 Greenock  
 PA15 1LY  
 Tel: 01475 712712  
 Fax: 01475 712731  
 aubrey.fawcett@inverclyde.nv.uk



DISABLED PERSONS' PARKING PLACE  
4 ALDERBRAE ROAD, PORT GLASGOW  
PLACE NO. 1748





This drawing has been reproduced from the original drawing held at the Ordnance Survey Office, Edinburgh, Scotland. Licence Number: 100023421

**DISABLED PERSONS' PARKING PLACE  
 GLENBRAE ROAD, PORT GLASGOW  
 PLACE No. 1266 RELOCATION**



Regeneration & Environment  
 Corporate Director: Aubrey Fawcett  
 Municipal Buildings  
 Clyde Square  
 Greenock  
 PA15 1LY  
 Tel: 01475 712712  
 Fax: 01475 712731  
 aubrey.fawcett@inverclyde.gov.uk